

IN A SMALL, CONVENIENT, BENCH-TOP ANALYZER, PENTRA 60 PROVIDES A COMPLETE HEMATOLOGY PROFILE INCLUDING 5 PART DIFFERENTIAL ANALYSIS FOR RELIABLE DIAGNOSIS AND PATIENT MANAGEMENT.



Meeting your needs, immediately.

- Immediate switch from the CBC to the 5 DIFF mode in one single operation on the front panel (no additional rinsing or start-up cycle).
- Hematological status in less than one minute.
- Only 30 µL (CBC mode) or 53 µL (5 DIFF mode) of sampling volume.
- Designed for the most demanding conditions (Pediatrics, Geriatrics,...).
- Highly cost-effective analyzer.



ABX PENTRA 60: TECHNICAL SPECIFICATIONS

12 Parameters (CBC mode)	<ul style="list-style-type: none">• RBC, HGB, HCT, MCV, MCH, MCHC, RDW• PLT, MPV, PCT, PDW• WBC
26 Parameters (5 DIFF mode)	<ul style="list-style-type: none">• RBC, HGB, HCT, MCV, MCH, MCHC, RDW• PLT, MPV, PCT, PDW• WBC, LYM, MON, NEU, EOS, BASO, ALY (Atypical Lymphocytes), LIC (Large Immature Cells) in % and #• RBC and BASO histograms• PLT histogram• High resolution LMNE matrix, including ALY and LIC populations
Sample handling	<ul style="list-style-type: none">• By single button aspiration on whole blood.• Open tube mode.
Sample volume	<ul style="list-style-type: none">• 30 µL in CBC mode• 53 µL in 5 DIFF mode
Throughput	<ul style="list-style-type: none">• 60 samples per hour
Post-draw stability	<ul style="list-style-type: none">• Up to 48 hours
Sample distribution	<ul style="list-style-type: none">• MDSS technology (HORIBA Medical Patent)
Counting methods	<ul style="list-style-type: none">• Cytochemistry• Focused Flow impedance• Light absorbance
Sample identification	<ul style="list-style-type: none">• Alphanumeric patient identification with patient run number and sequence number• Optional barcode reading
Display	<ul style="list-style-type: none">• 16 lines LCD screen
Data processing	<ul style="list-style-type: none">• Multitask multifunction• RS 232 C• Uni-directional
Printer	<ul style="list-style-type: none">• EPSON LX 300• 80 column dot matrix printer, A4 paper format
Report options	<ul style="list-style-type: none">• Histogram selection for 12 or 26 parameters• User programmable parameter units• Reference values printed on every report• Full page graphic reports
Start-up cycles	<ul style="list-style-type: none">• Automatic and programmable
Cleaning cycles	<ul style="list-style-type: none">• Automatic and programmable
Reagents	<ul style="list-style-type: none">• ABX DILUENT (20 L)• ABX ALPHALYSE (0.4 L)• ABX CLEANER (1 L)• ABX EOSINOFIX (1 L)• ABX BASOLYSE II (1 L)• Optional CN-Free Lysis: ABX LYSEBIO (0.4 L)
Reagent alarm	<ul style="list-style-type: none">• Yes
Dimensions	<ul style="list-style-type: none">• 51,6 x 44,4 x 48,1 cm (H x W x D)
Weight	<ul style="list-style-type: none">• 35 Kg
Power supply	<ul style="list-style-type: none">• 100 V to 240 V 50/60 Hz, 200 VA

Parameters	Linearity limits*	Visible range*	Error limit**
WBC	0 – 120 x 10 ⁹ /mm ³	120 - 150	±0.3 7.5%
RBC	0 – 8 x 10 ¹² /mm ³	8 - 18	±0.07 3%
HGB	0 – 24 gr/dl	24 - 30	±0.3 3%
HCT	0 – 67 %	67 - 80	±2 3%
PLT (WHOLE BLOOD)	0 – 1900 x 10 ⁹ /mm ³	1900 - 2800	±10 12.5%
PLT (PLT CONCENTRATE)	0 – 2800 x 10 ⁹ /mm ³	2800 - 3200	±10 12.5%

* From software release V2.2.0 and above
** Which ever is greater

Parameters	Within-run precision
Lymphocytes	< 5 %
Monocytes	< 10 %
Neutrophils	< 3 %
Eosinophils	< 20 %
Basophils	< 30 %



FRANCE +33 (0)4 67 14 15 15 - BENELUX +32 (0)3 281 49 08 - ITALY +39 / 06 51 59 22 1 - SPAIN +34 / 91- 353 30 10 - PORTUGAL +351 / 2 14 72 17 70
UK +44 (0) 1604 542650 - POLAND +48 / 22 6732022 - USA +1 / 949 453 0500 - BRAZIL +55 / 11 5545 1500 - THAILAND +66 / 2 861 59 95
CHINA +86 / 21 3222 1818 - GERMANY AXON LAB AG +49 / 7153 92260 - DISTRIBUTORS NETWORK +33 (0)4 67 14 15 16
HORIBA Medical online : <http://www.horiba.com/medical>





ABX Pentra 60

26 PARAMETERS WITH 5 PART DIFFERENTIAL ANALYSIS

SIMPLICITY
QUALITY
EFFICIENCY

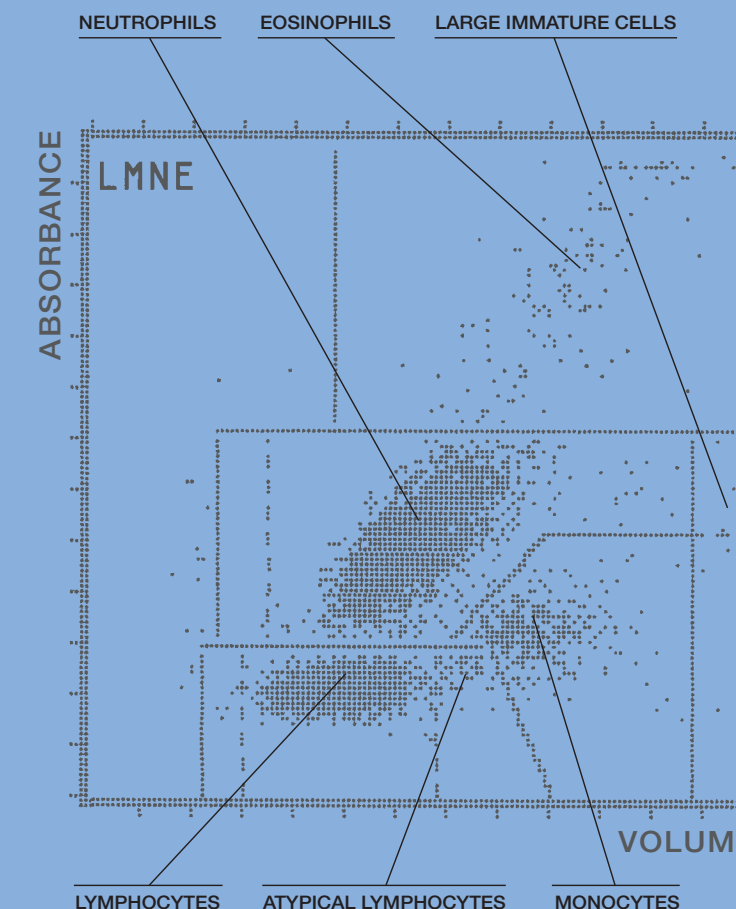
In less than a minute, PENTRA 60 provides a full diagnostic access to the hematological status of the patient with a full 5 part-differential, including Atypical Lymphocytes (ALY) and Large Immature Cells (LIC).



- 26 Parameters fully automated hematology analyzer
- DHSS* technology combining cytochemistry, focused flow impedance and light absorbance principles of measurement
- Full 5 part differential, including Atypical Lymphocytes (ALY) and Large Immature Cells (LIC)
- High resolution matrix + 3 programmable histograms for RBC, BASO and PLT
- 48 hours post-draw stability
- 60 samples / hour (CBC / CBC+5 DIFF)
- Selectable CBC or CBC+5 DIFF analysis
- Only 53 µL sampling volume (5 DIFF) on primary tube (no predilution step)
- Multi Distribution Sampling System (MDSS*)
- Optional Cyanide-free lysis

* HORIBA Medical patent

Cytochemistry, Focused Flow Impedance and Light Absorbance:
PENTRA 60 yields more data with increased accuracy.



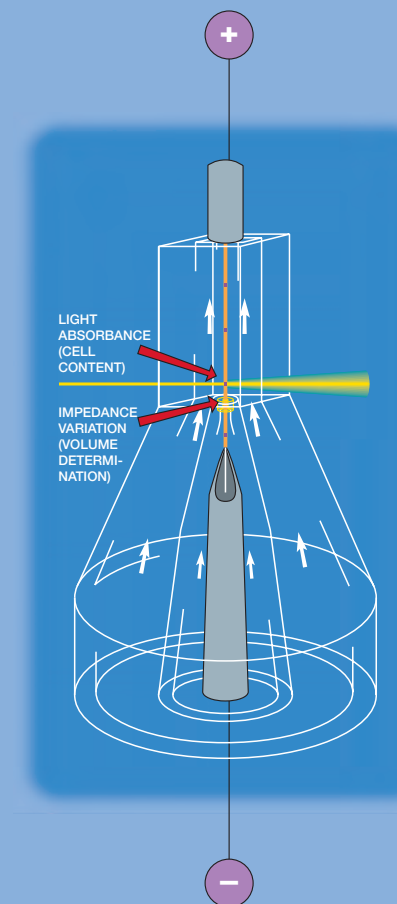
DHSS

"DOUBLE HYDRO DYNAMIC SEQUENTIAL SYSTEM"

DHSS is an ABX proprietary technology which allows for the measurement of the cell volume and for the analysis of the cell content in one unique flow cell.

DHSS offers exclusive advantages:

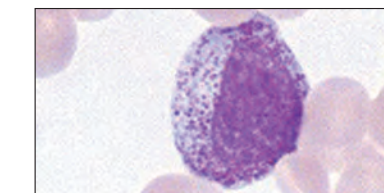
- A sequential system (timing device) is applied to the two measurements; the first passage of the cell through the aperture impedance system should be combined with the passage through the light beam in less than 200 micro-second time period. This timing prevents the counting of bubbles or static and will give a perfect leukocyte differential (ABX LMNE matrix).
- The DHSS technology guarantees optimum repeatability and post-draw stability of the analysis.



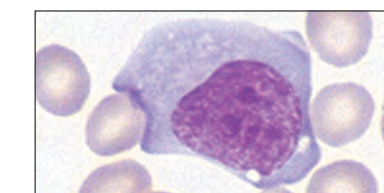
Full 5 part differential WBC analysis

Each type of WBC is stabilized in its native form, the three measurement principals are sequentially applied:

- CYTOCHEMISTRY (Incubation with Eosinofix™).
- FOCUSED FLOW IMPEDANCE, to measure the volume.
- LIGHT ABSORBANCE, to analyze the cell content.

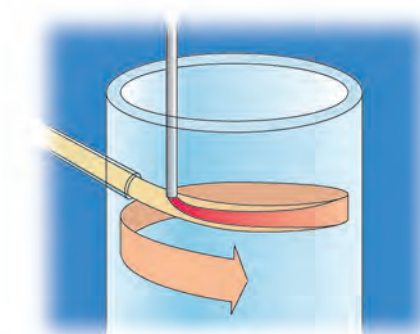


The high definition of the matrix allows the definition of 2 additional populations: Large Immature Cells (LIC), and Atypical Lymphocytes (ALY), in percentage and absolute count.



MDSS

"MULTI DISTRIBUTION SAMPLING SYSTEM"



- Only 53 µL of sampling volume (whole blood) for a CBC+5 DIFF analysis
- Perfect mixing and homogenization of the sample and the reagents
- Immediate CBC/CBC+5 DIFF selection with no rinsing cycle
- Post-draw stability of more than 48 hours
- No shear-valve, no compressor, no maintenance

Following aspiration of 30µL (CBC mode) or 53µL (5 DIFF mode) of whole blood through the sampling needle, blood is then split into appropriate aliquots in the specific chambers for dilution. The aliquots are injected in a tangential flow of pre-heated reagent, which mixes homogeneously the cell suspension and cleans, the sampling needle internally and externally.



Quality: Accurate results and ease of use

- Only 30 µL (CBC mode) or 53 µL (CBC+5 DIFF mode) sampling volume
- Alphanumeric or barcode patient identification
- Complete selective flagging
- Normal limits printed with patient results



Simplicity: Automatic and compact analyzer

- One button aspiration with probe wipe
- 12 or 26 parameters with histograms and matrices
- Automatic calibration
- One button auto/manual start up and shut down



Efficiency: Cost-effective hematology analyzer

- Only 4 on-board reagents (+ diluent)
- Low reagent consumption
- Selectable CBC or CBC+5 DIFF analysis
- "Zero-maintenance" concept
- Highly cost effective analyzer

BEHIND ITS ELEGANT AND HIGHLY COMPACT DESIGN, PENTRA 60 CONCEALS THE VERY BEST IN INNOVATION IN ORDER TO MEET YOUR EVERY NEED IN TERMS OF QUALITY AND COST CONTROL MANAGEMENT.